

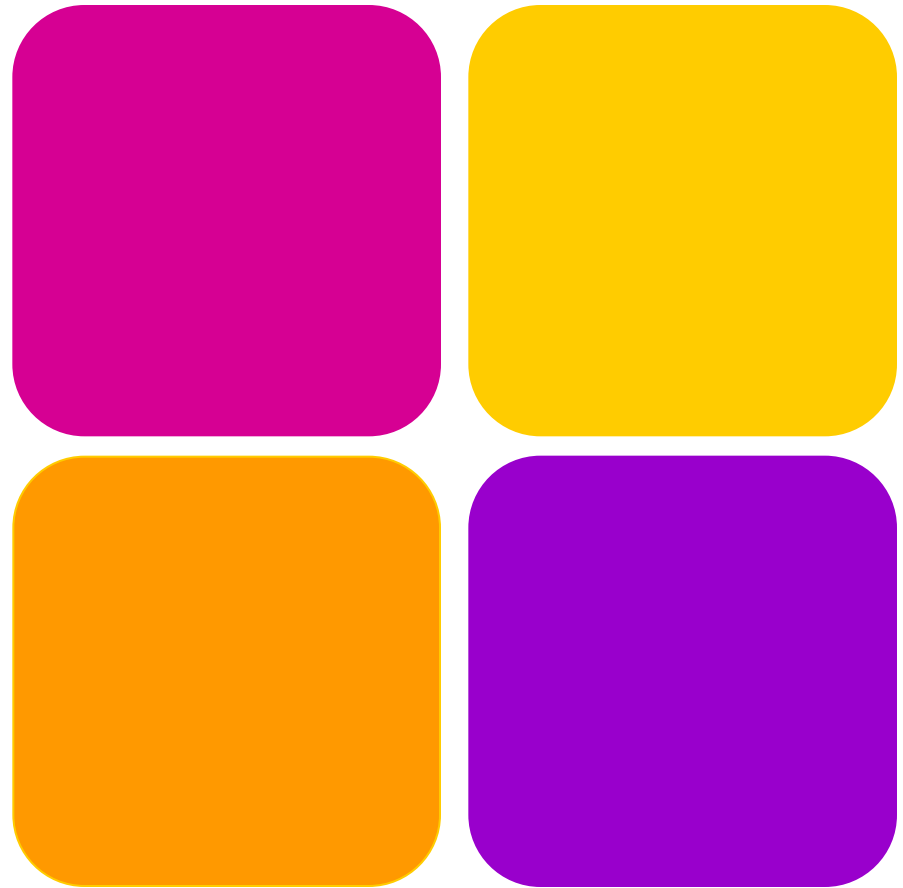
3



Northern Sydney Health District and PHN

Hungry for Change

Changing the
Landscape of Eating
Disorders in NSLHD



Monique van Leeuwen
NSLHD Eating Disorder Coordinator
June 2018



Health
Northern Sydney
Local Health District

monique.covey@health.nsw.gov.au

NEDC Members' Meeting

1-2 June 2018

Northern Sydney Local Health District

- 912,000 residents in 2016
- 900 km²
- 11 Local Government Areas
- 3 Health Services
 - North Shore Ryde
 - Northern Beaches
 - Hornsby Ku-ring-gai

- Presentations Jul11 – Dec16
 - 697 separations for people with eating disorders
- No public eating disorder services
- Significant private services

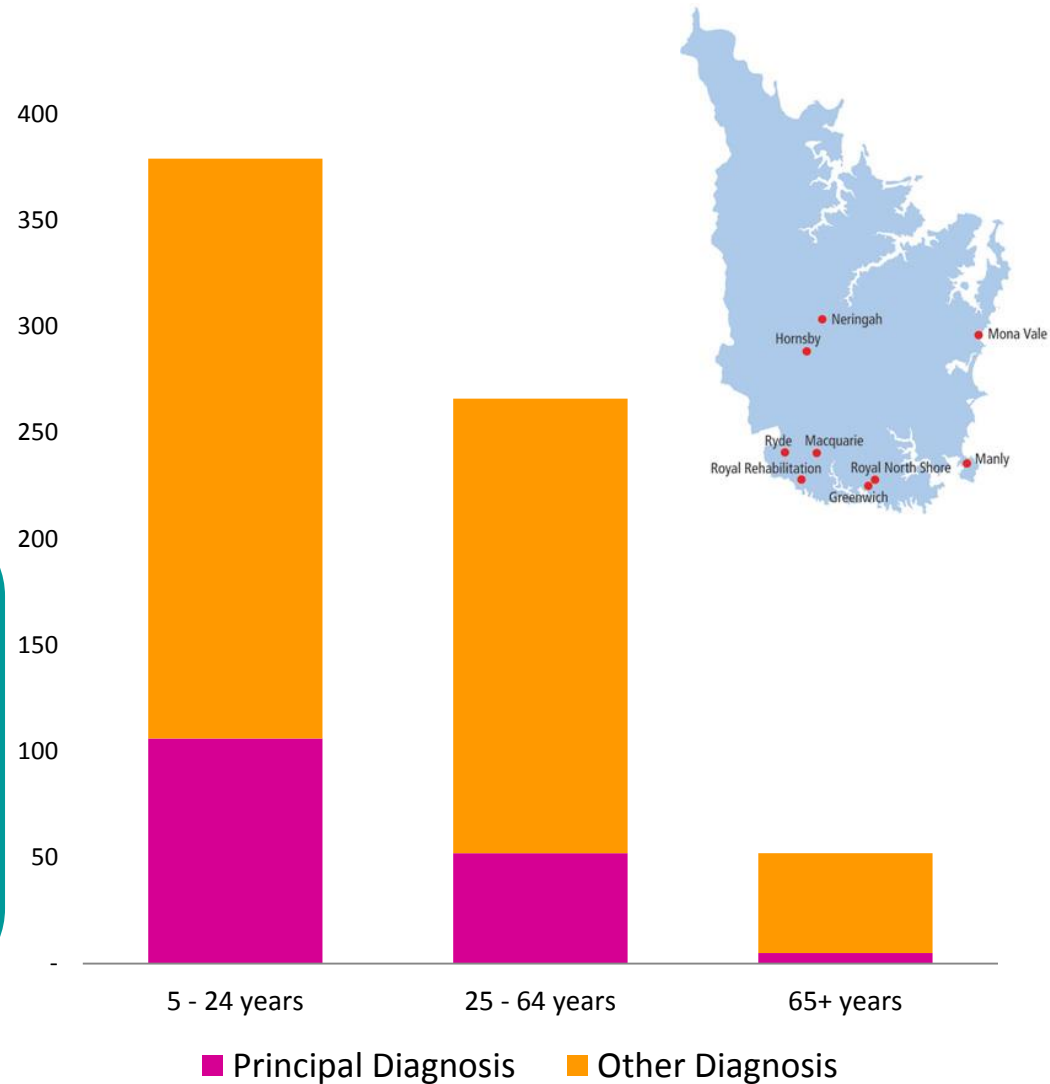
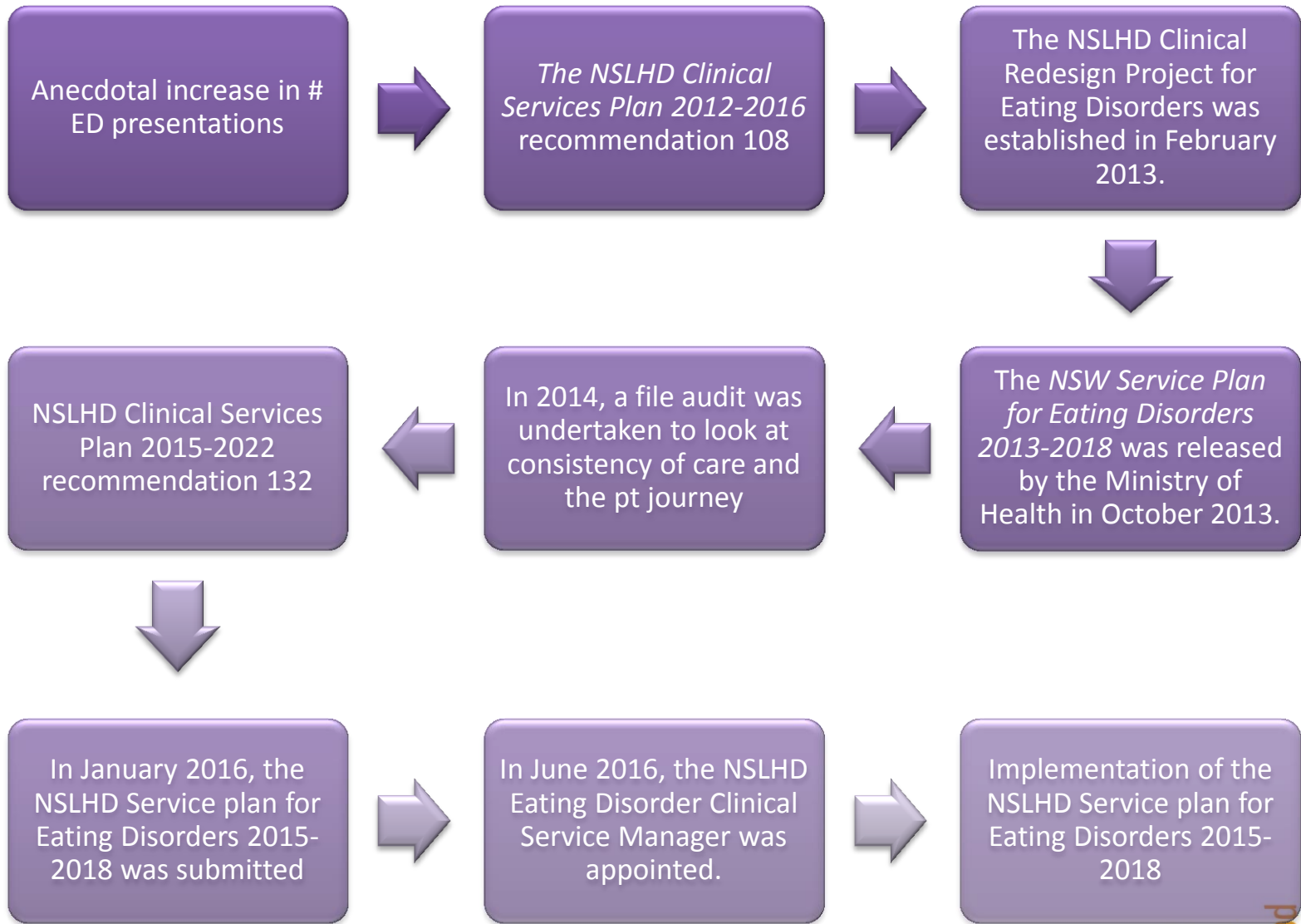


Figure 1. Total eating disorder separations in all NSLHD hospitals from 2011 to December 2016

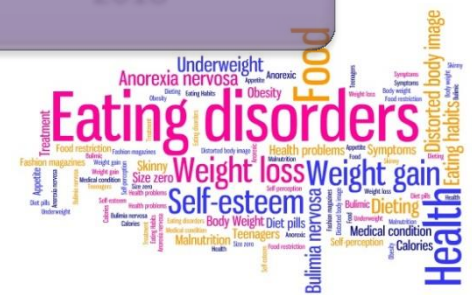




Background

NEDC Members' Meeting

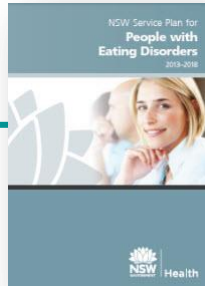
1-2 June 2018



Framework for Change



NSW Service Plan 2013-2018



- Mandate from MOH which states Eating Disorders are CORE BUSINESS for all LHDs
- Enhancements to current services and funding for a coordinator for each LHD

File Audit Results

- 22 different wards across NSLHD
- Lack of a coordinated approach
- Skill base of clinicians variable
- Documentation varied
- Inconsistency of diagnosis

NSLHD Service Plan 2013-2018

- Opening and streamlining pathways in and out of care
- Providing evidenced based treatment as core business in general medical and mental health settings
- Education and training to all clinicians



NEDC Members Meeting
1-2 June 2018



- Peter Beumont Eating Disorder Unit at RPA
- SCHN Eating Disorder Unit at Westmead

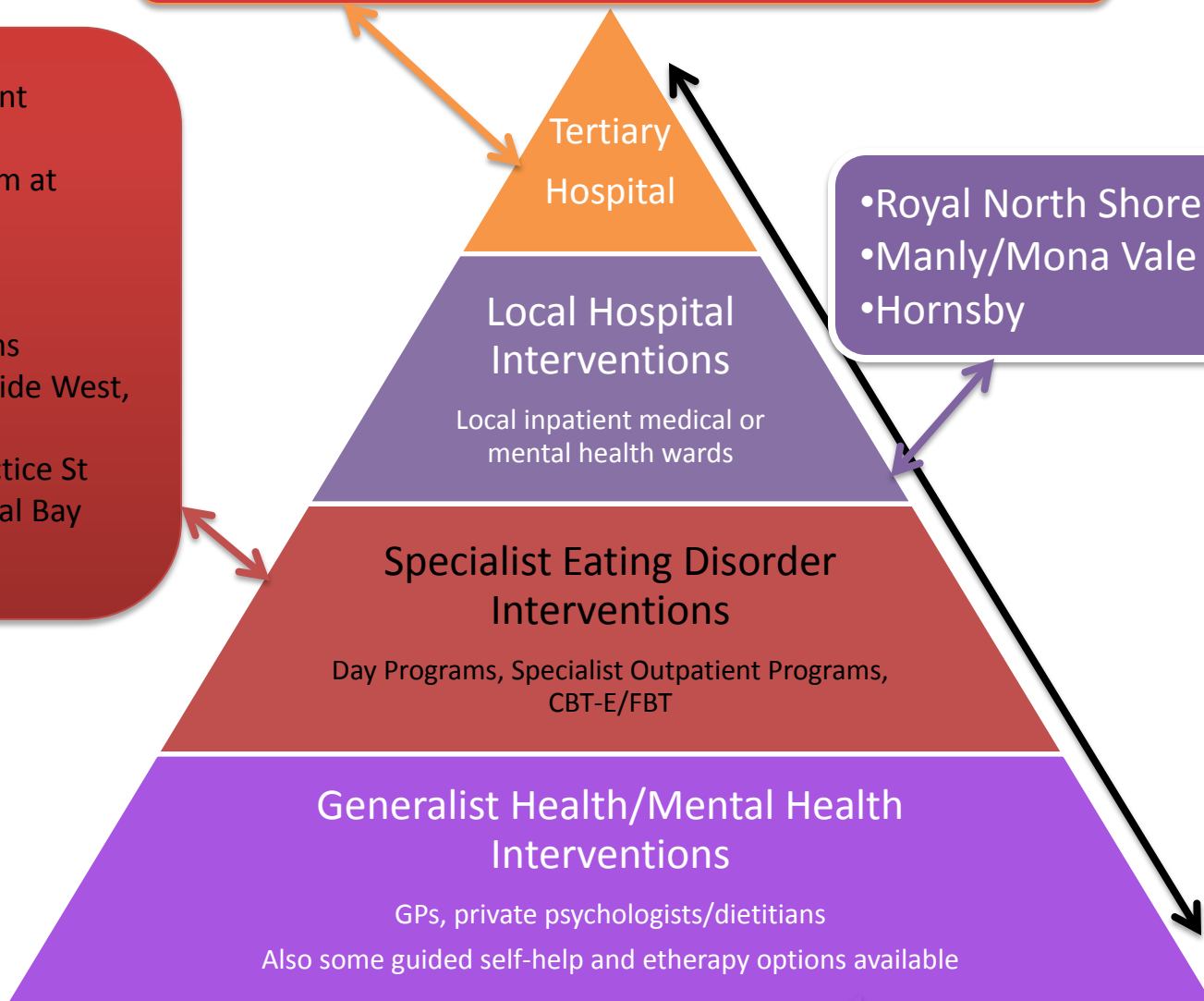
Public:

- Peter Beumont Day/Outpatient Program at RPA
- SCHN Day/Outpatient program at Butterfly House

Private:

- Butterfly Foundation Programs
- Northside Greenwich, Northside West, Wesley Ashfield
- Redleaf Wahroonga, The Practice St Leonards, Body Matters Neutral Bay
- Individual clinicians

Levels of care and treatment



- Royal North Shore
- Manly/Mona Vale
- Hornsby

- NSLHD CMHT & CYMHS teams
 - LNS, Ryde, NB, HK
- Headspace – Chatswood & Brookvale

NEDC Members' Meeting
1-2 June 2018

Partnerships



- **SNPHN**  **SYDNEY NORTH** Primary Health Network
◆ Health Pathways, Education Sessions, Committees
- **Inside Out Institute**  Institute for Eating Disorders
◆ Education, Clinical Support, Research
- **Butterfly Foundation**  Foundation for Eating Disorders
◆ Eating Disorder Week event, Committees, Services
- **Headspace**  **headspace** National Youth Mental Health Foundation
◆ Services, Education, Training, Research
- **NEDC**  National Eating Disorders Collaboration
◆ Education



• Private Services

NEDC Members' Meeting
1-2 June 2018

