



National
Eating Disorders
Collaboration

Building the System of Care

Dr. Beth Shelton

National Director NEDC

Evidence

Experience

Expertise



National
Eating Disorders
Collaboration

1. What is the **System of Care**?
2. How do we **build** the System of Care?
3. What we will do today to build the system of care

Evidence

Experience

Expertise

What is the System of Care concept?

Intention: a **guide** for service systems and service delivery to improve the lives of people experiencing eating disorders and their families and supports

What it is: an organizational framework for system building and reform – a guide to local and national solutions

What it is not: A model for replication; static across time or context; a definition of which agencies should provide which types of service

Definition: The System of Care

A response to a person at risk of, or experiencing an eating disorder and their family and supports

A coordinated network of services and supports that is able to deliver the right treatment at the right time, and respond flexibly to changes in the person's needs - regardless of the person's geographic location, age, economic circumstances, or cultural group

Ornithorhyncus Paradoxus



Dulai-wurrung



Wilam
A Birrarung
Story
by
Aunty Joy
Murphy
& Andrew Kelly
Illustrations
By
Lisa Kennedy

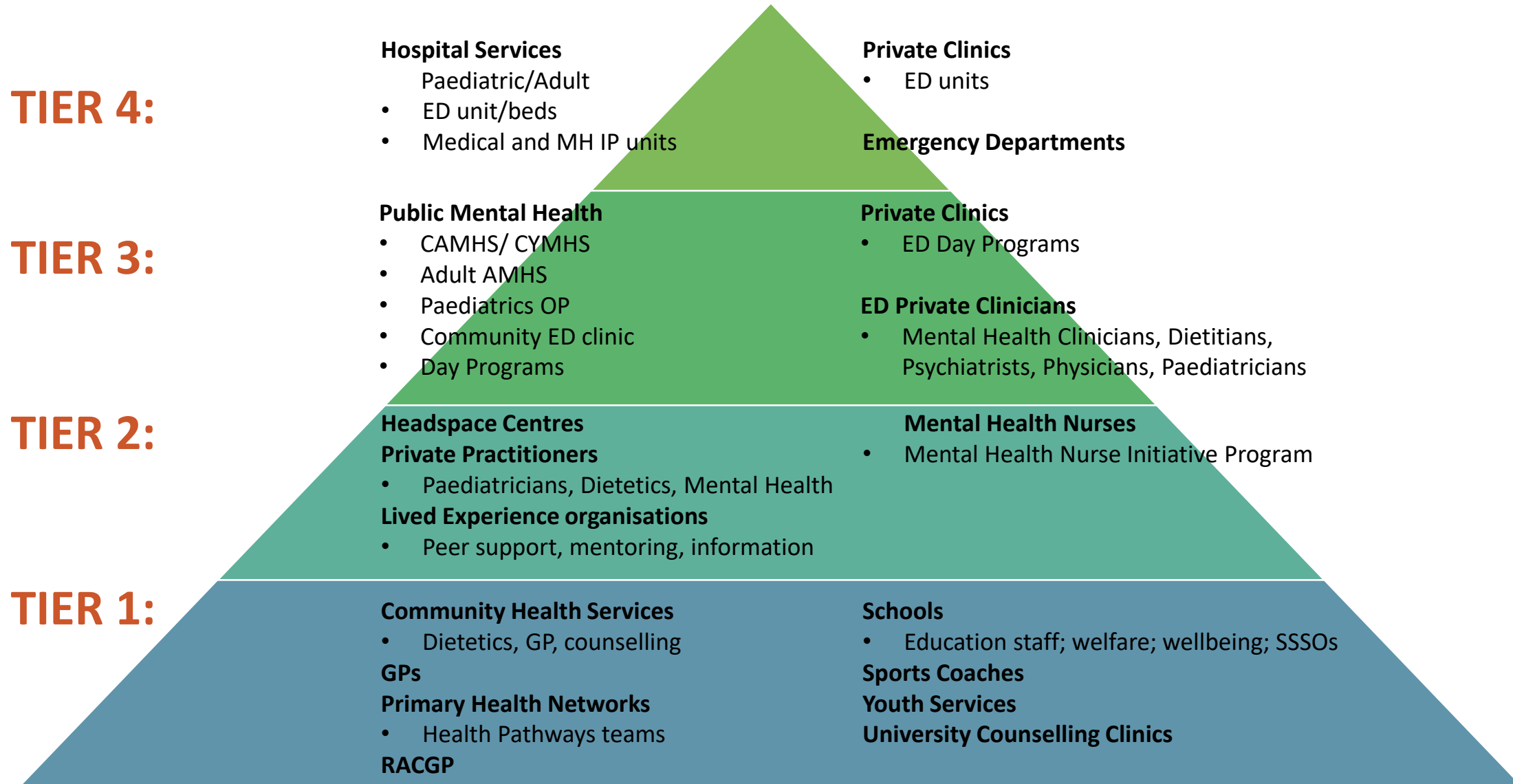


Useful System of Care Concepts:

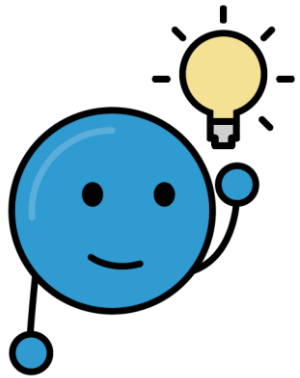
- Function – WHAT?
- Infrastructure – WHERE and WHO?
- Principles and standards- HOW?

- Systems level
- Program Level
- Practice Level

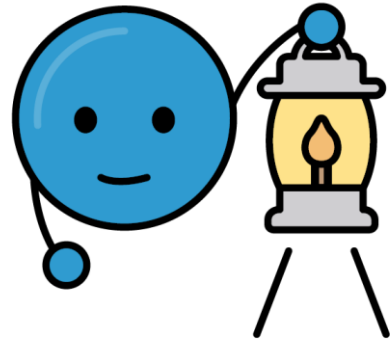
System of Care: Tiers and Infrastructure



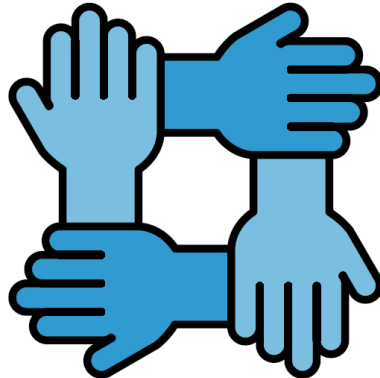
System of Care: Functions



Early
Identification



Initial
Response



Shared Care

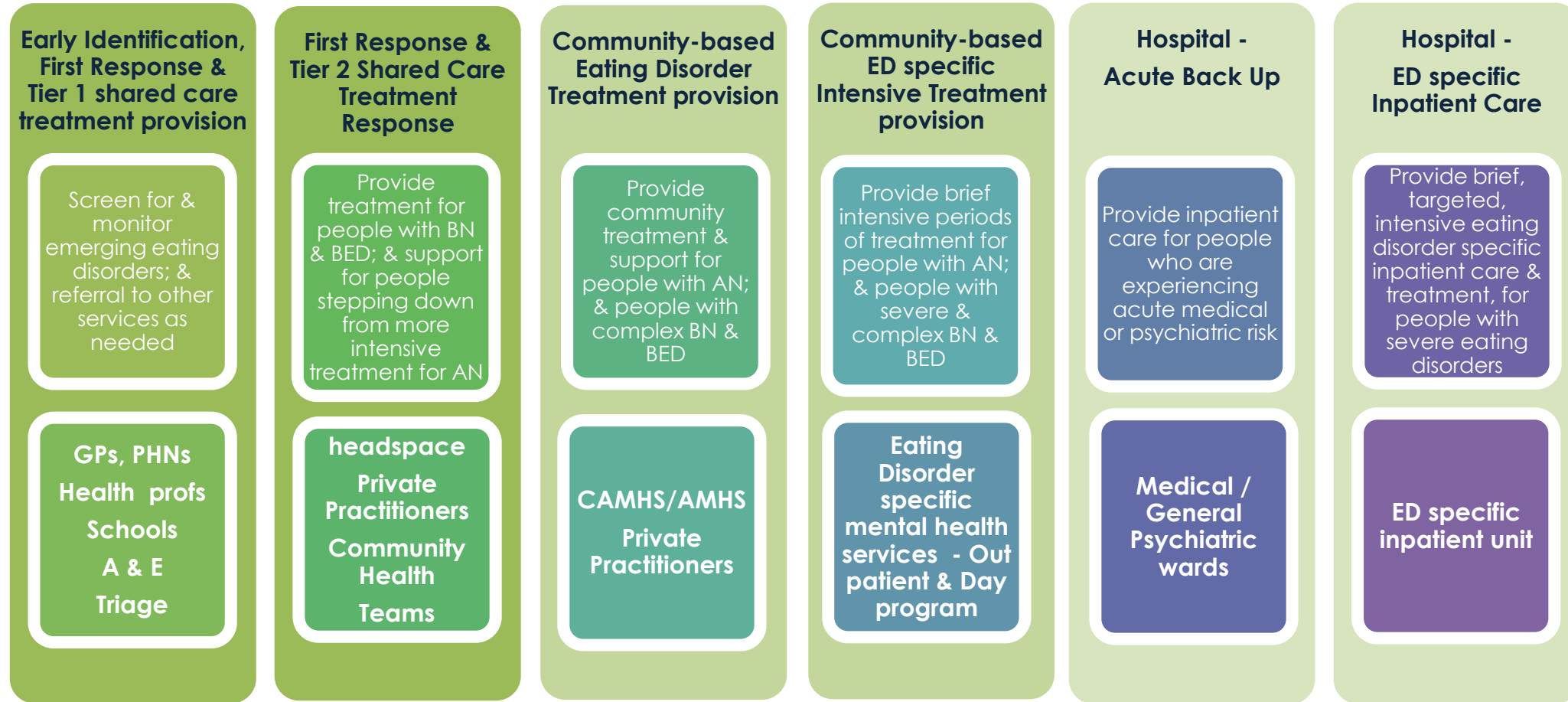


Treatment



Recovery
Support

Stepped System of Care

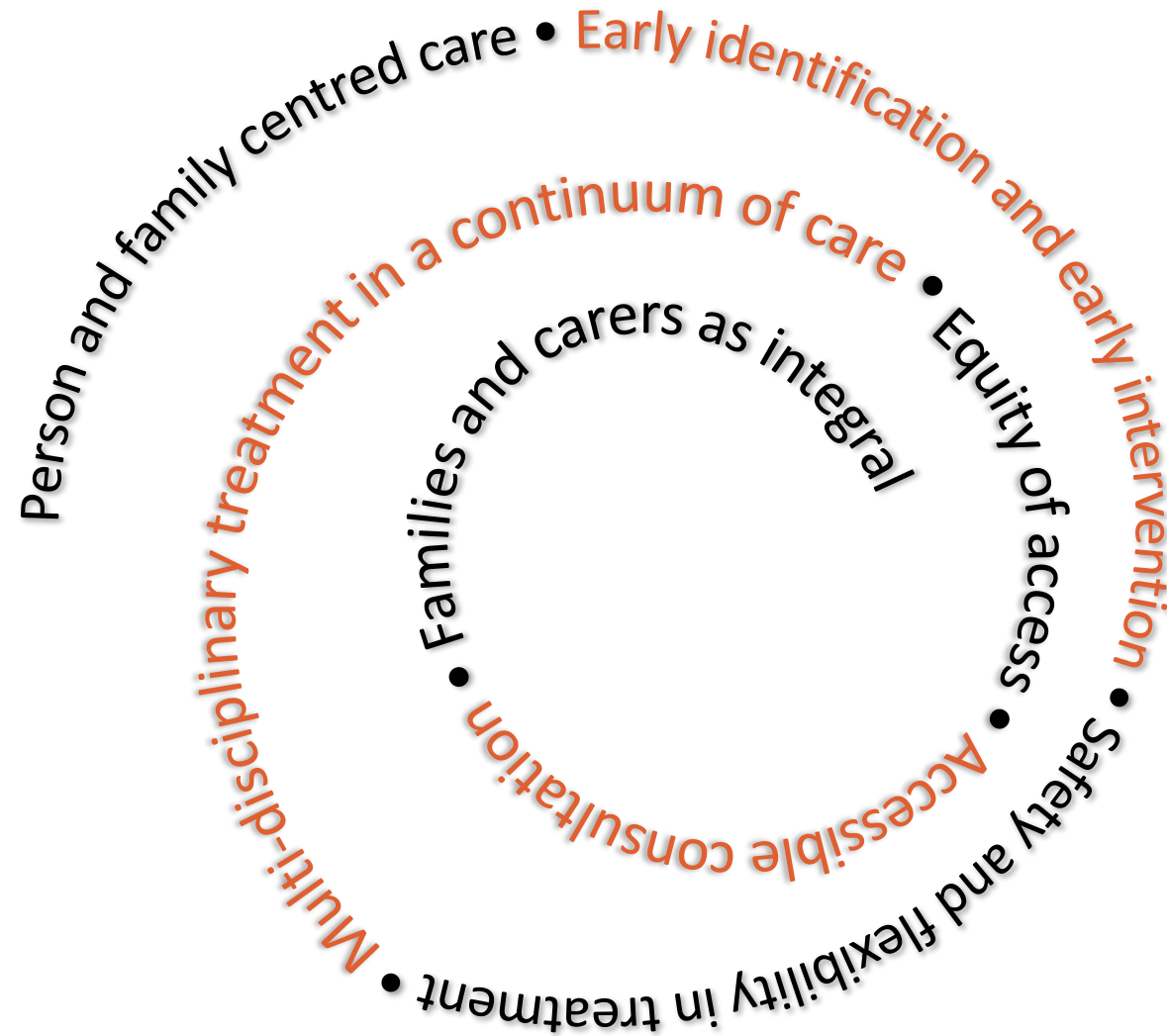


Community
Treatment intensity – Low

Hospital
Treatment intensity – High



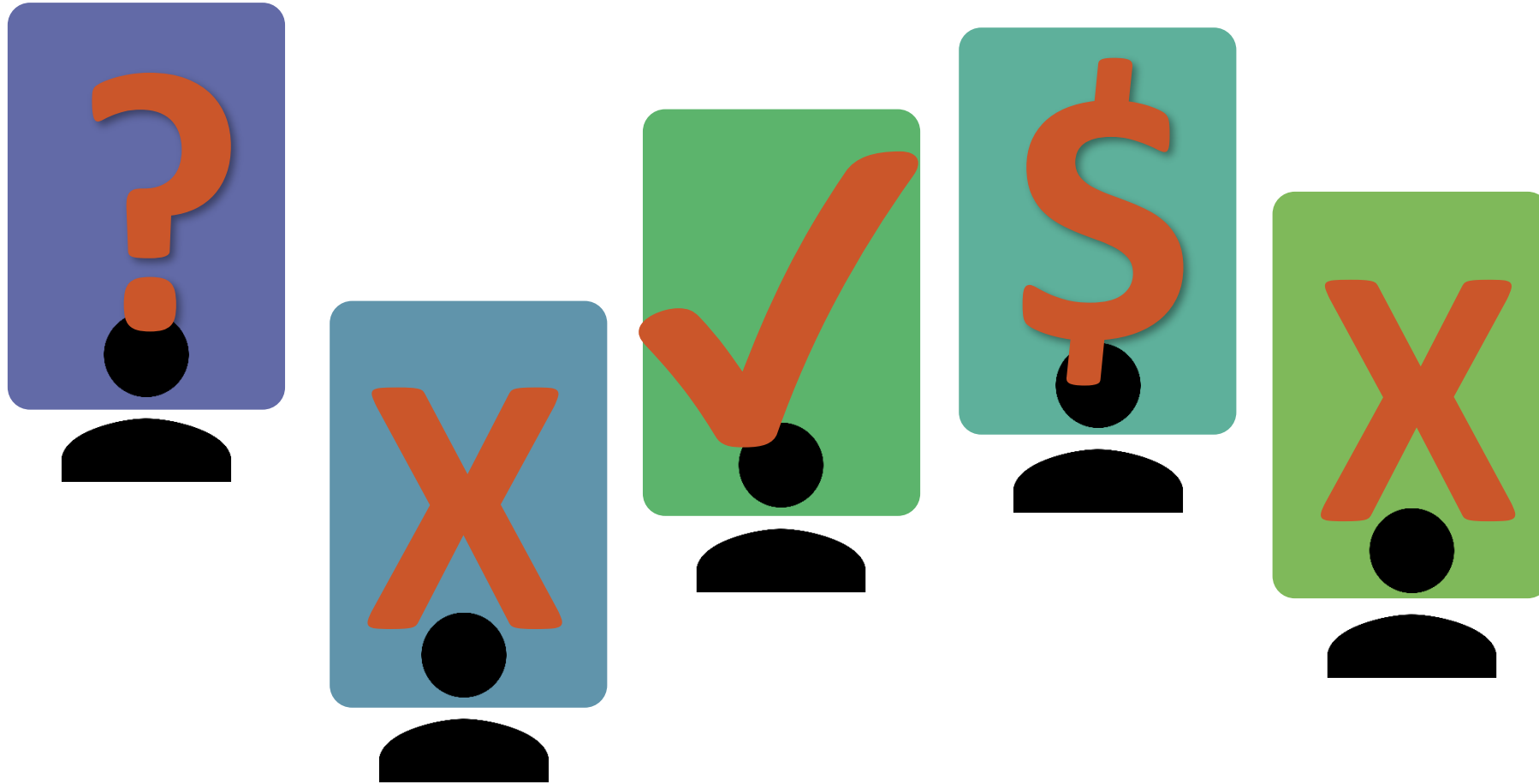
Principles and Standards



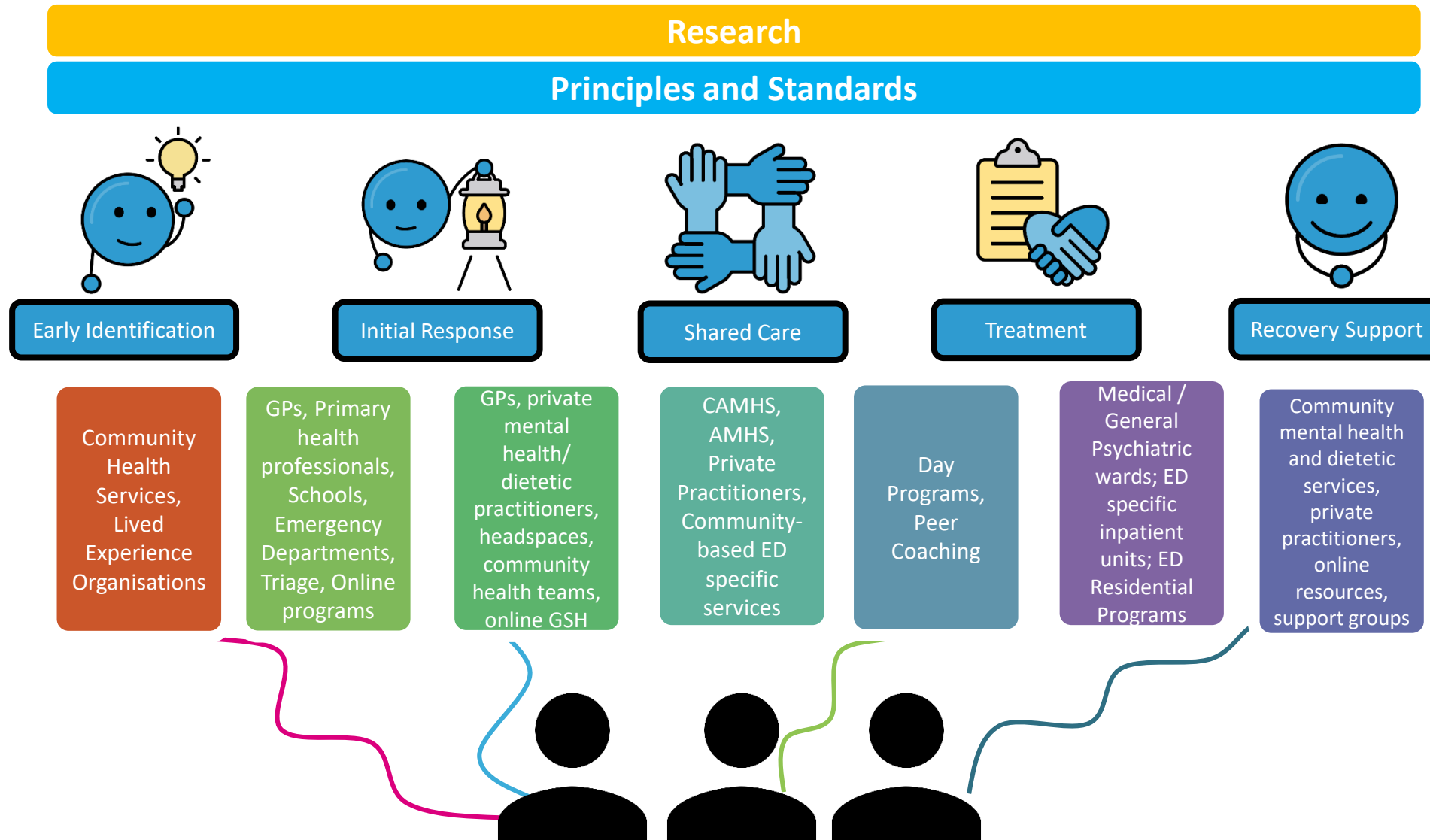
Implementation Principles

- Evidence informed and evidence-generating approaches
- A skilled workforce
- Communication to ensure an informed and responsive community
- Systems support integration, collaboration and on-going development

System of Care from the inside?



Stepped System of Care for Eating Disorders



How do we build the system of care?



National
Eating Disorders
Collaboration

What will we do today to build the system of care?

Consider the next 5 – 10 years. Two questions:

1. What is most important to you to build or change?
2. What is most important for the system of care?

Your views will be elicited, thematically organised and reported back

- Listen to accounts of lived experience of pathways through care
- Hear about a new element in the System of Care – peer work
- Hear from Expert Systems Builders

Reference Documents

- Stroul, B.A., Blau, G.M., Friedman, R.M. **Updating the System of Care Concept and Philosophy.** National Technical Assistance Center for Mental Health Services Administration. U.S Department of Health and Human Services
- **National Eating Disorders Framework** National Eating Disorder Collaboration (2012). *An Integrated Response to Complexity*
- **Stepped Care Approaches to Eating Disorders.** National Eating Disorder Collaboration (2017)
- Hay, P., Chinn, D., Forbes, D., Madden, S., Newton, R., Sugenor, L., Touyz, S. & Ward, W. (2014). **Royal Australian and New Zealand College of Psychiatrists clinical practice guidelines for the treatment of eating disorders.** *Australian & New Zealand Journal of Psychiatry*, 48(11): 1–62.
- National Eating Disorders Collaboration (NEDC) (2015). **Competence to Prevent and Treat Eating Disorders: Establishing a Foundation for Safe Effective Responses to People with Eating Disorders.**
- National Eating Disorders Collaboration (NEDC) (2014). **Practical Responses to Eating Disorders: A Guide to Implementing Responses to Eating Disorders in General Health Services.**
- Bruns, E.J et al. **Ten Principles of the Wraparound Process.** Research and Center on Family Support and Children’s Mental Health





National
Eating Disorders
Collaboration

Building the System of Care for Eating Disorders

Website

www.nedc.com.au

Email

info@nedc.com.au

Facebook

[@JoinNEDC](https://www.facebook.com/JoinNEDC)

Twitter

[@NEDC_Australia](https://twitter.com/NEDC_Australia)

Instagram

[@nedc_australia](https://www.instagram.com/nedc_australia)

LinkedIn

[the-national-eating-
disorders-
collaboration](https://www.linkedin.com/company/the-national-eating-disorders-collaboration)